

# A TASTE OF BAROQUE

1e Cor/Alt Es  
1e Corno/Alto Mib  
Horn/Alto Horn I Es

Henry Purcell/Johan Krieger/Giovanni Battista Pescetti  
arr. Rita Defoort

## 1. A Ground in Gamut

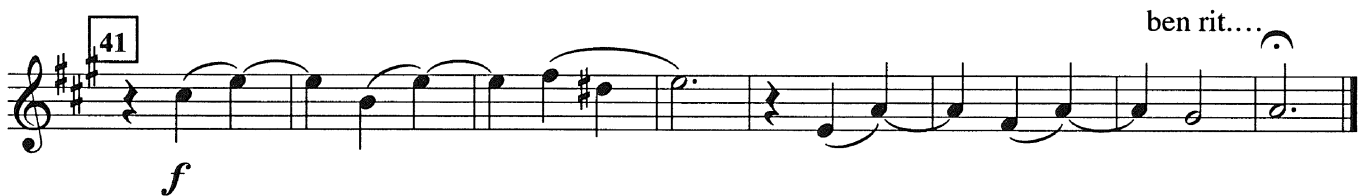
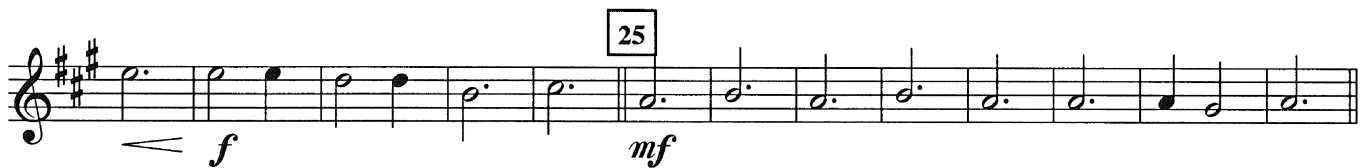
Duration 1 40 min.

(H. Purcell, 1659-1695)

Andante Cantabile ♩=92



*f* 2nd time only



## 2. Menuet (J. Krieger)

Duration 1 10 min

1651-1735

Andante ♩=84



17 *mf*

25 *f* *ben rit...* *ff*

### 3. Presto (G.B. Pescetti)

Duration 1 15 min 1704-1766

Presto ♩ = 120

9 *p* *f*

16 *f*

24 *f* *mf* *f*

32 *mp* *mf*

44 *f*

50 *ff*

# A TASTE OF BAROQUE

2e Cor/Alt Es  
2e Corno/Alto Mib  
Horn/Alto Horn II Es

Henry Purcell/Johan Krieger/Giovanni Battista Pescetti  
arr. Rita Defoort

## 1. A Ground in Gamut

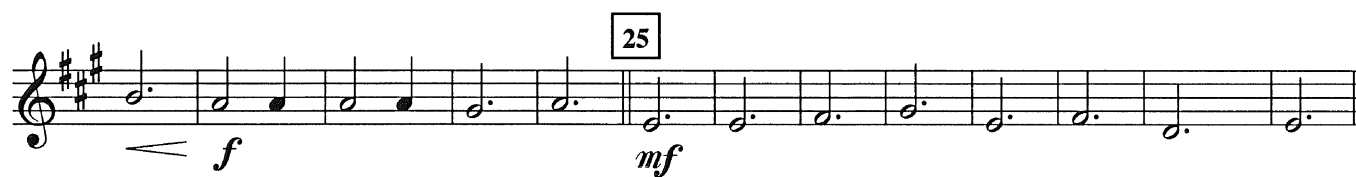
Duration 1 40 min

(H. Purcell, 1659-1695)

Andante Cantabile ♩=92



*f* 2nd time only



## 2. Menuet (J. Krieger)

Duration 1 10 min

1651-1735

Andante ♩=84



Musical notation for measures 17 and 25. Measure 17 is marked *mf*. Measure 25 is marked *f* and includes the instruction "ben rit..." with a decrescendo hairpin leading to *ff*.

**3. Presto** (G.B. Pescetti)  
Duration 1 15 min 1704-1766

Presto ♩ = 120

Musical notation for measures 9, 16, 24, 32, 44, and 50. Measure 9 is marked *p*. Measure 16 is marked *f*. Measure 24 is marked *f* and *mf*. Measure 32 is marked *mp* and *mf*. Measure 44 is marked *f*. Measure 50 is marked *ff*. The piece features numerous triplet markings throughout.

# A TASTE OF BAROQUE

3e Cor/Alt Es  
3e Corno/Alto Mib  
Horn/Alto Horn III Es

Henry Purcell/Johan Krieger/Giovanni Battista Pescetti  
arr. Rita Defoort

## 1. A Ground in Gamut

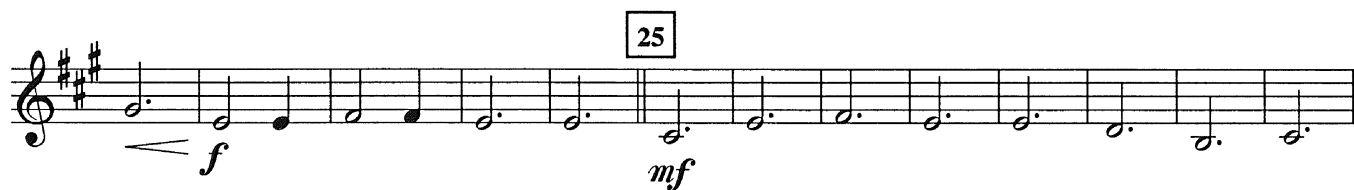
Duration 1 40 min

(H. Purcell, 1659-1695)

Andante Cantabile ♩ = 92



*f* 2nd time only



## 2. Menuet (J. Krieger)

Duration 1 10 min

1651-1735

Andante ♩ = 84



*mp*



17 *mf*

25 *f* *ben rit...* *ff*

**3. Presto** (G.B. Pescetti)  
Duration 1 15 min 1704-1766

Presto ♩=120

*f* *mf*

9 *p* 16 *f*

24 *f* *mf* *f*

32 *mp* *mf*

44 *f*

50 *ff*

# A TASTE OF BAROQUE

1e Trombone Bes/Sib  
Posaune I B

Henry Purcell/Johan Krieger/Giovanni Battista Pescetti  
arr. Rita Defoort

## 1. A Ground in Gamut

Duration 1 40 min

(H. Purcell, 1659-1695)

Andante Cantabile ♩ = 92

Musical score for 'A Ground in Gamut' in bass clef, 3/4 time, key of D major. The score consists of five staves of music. The first staff begins with a forte (*f*) dynamic. The second staff has a measure rest of 4 measures, marked *mp*, followed by a *mf* section. The third staff starts with *f* and moves to *mf*. The fourth staff starts with *mp* and includes a 'Bar' marking above measure 33. The fifth staff starts with *f*, includes a 'play' marking above measure 41, and ends with a 'ben rit...' marking above the final measure.

## 2. Menuet (J. Krieger)

Duration 1 10 min

1651-1735

Andante ♩ = 84

Musical score for 'Menuet' in bass clef, 3/4 time, key of D minor. The score consists of one staff of music starting with a mezzo-piano (*mp*) dynamic.

9 8 17

*mf*

Detailed description: This musical staff contains measures 9 through 17. It begins with a measure rest for 8 measures, followed by a measure rest for 17 measures. The music consists of eighth notes with slurs, starting at a mezzo-forte (*mf*) dynamic.

25

*f* *ff* ben rit....

Detailed description: This musical staff contains measures 25 through the end of the section. It starts with a forte (*f*) dynamic and ends with a fortissimo (*ff*) dynamic and a 'ben rit...' (ben ritardando) instruction. The notes are eighth notes with slurs.

**3. Presto** (G.B. Pescetti)  
Duration 1 15 min 1704-1766

Presto ♩ = 120

*f* *mf*

Detailed description: This musical staff contains measures 1 through 9. It is in 2/4 time and starts with a forte (*f*) dynamic, moving to mezzo-forte (*mf*) by measure 9. The music features eighth notes and triplets.

9

*p*

Detailed description: This musical staff contains measures 9 through 16. It starts with a piano (*p*) dynamic and includes a measure rest for 9 measures. The music features eighth notes and triplets.

16 24

*f*

Detailed description: This musical staff contains measures 16 through 24. It starts with a forte (*f*) dynamic and ends with a measure rest for 24 measures. The music features eighth notes and slurs.

32

*f* *mp*

Detailed description: This musical staff contains measures 32 through 39. It starts with a forte (*f*) dynamic and moves to mezzo-piano (*mp*) by measure 32. The music features eighth notes and triplets, ending with a repeat sign.

44

*mf* *f*

Detailed description: This musical staff contains measures 44 through 50. It starts with mezzo-forte (*mf*) and moves to forte (*f*) by measure 44. The music features eighth notes with slurs.

50

*ff*

Detailed description: This musical staff contains measures 50 through the end of the section. It starts with a fortissimo (*ff*) dynamic and includes a measure rest for 50 measures. The music features eighth notes with slurs.



# A TASTE OF BAROQUE

2e Trombone Bes/Sib  
Posaune II B



Henry Purcell/Johan Krieger/Giovanni Battista Pescetti  
arr. Rita Defoort

## 1. A Ground in Gamut

Duration 1 40 min

(H. Purcell, 1659-1695)

Andante Cantabile  $\text{♩} = 92$



*f*

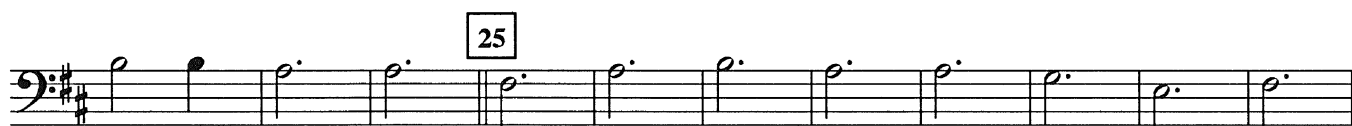


*mp*

17

*mf*

*f*



*mf*



*f*

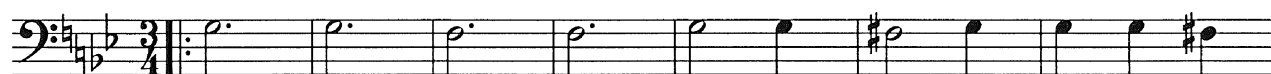
ben rit...

## 2. Menuet (J. Krieger)

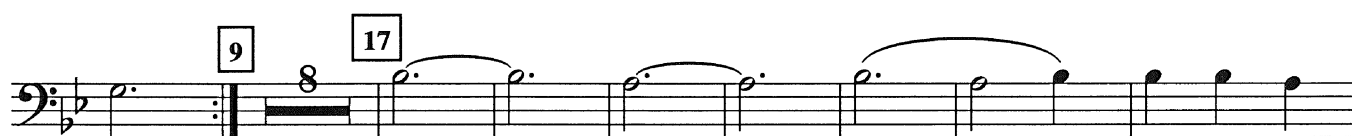
Duration 1 10 min

1651-1735

Andante  $\text{♩} = 84$



*mp*



*mf*

25 *f* *ben rit...* *ff*

**3. Presto** (G.B. Pescetti)  
Duration 1 15 min 1704-1766

Presto ♩ = 120

*f* *mf*

9 *p*

16 *f*

24 *f* *mp* 32

*mf*

44 *f*

50 *ff*

# A TASTE OF BAROQUE

3e Trombone Bes/Sib  
Posaune III B

Henry Purcell/Johan Krieger/Giovanni Battista Pescetti  
arr. Rita Defoort

## 1. A Ground in Gamut

Duration 1 40 min

(H. Purcell, 1659-1695)

Andante Cantabile ♩=92



*f*



*mp*

*mf*

*f*



*mf*



*f*

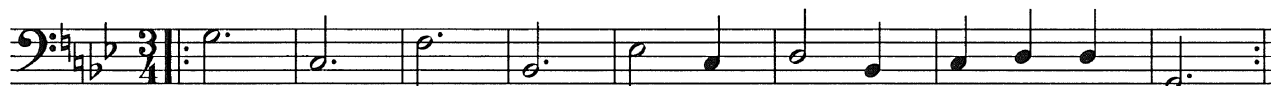
ben rit...

## 2. Menuet (J. Krieger)

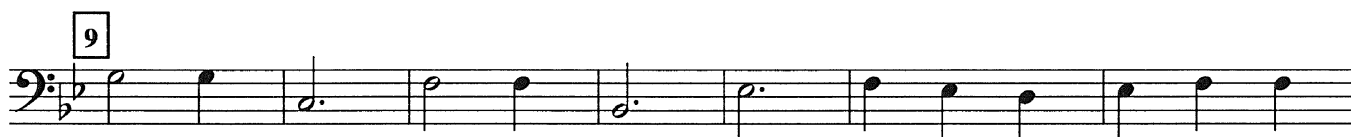
Duration 1 10 min

(J. Krieger)  
1651-1735

Andante ♩=84



*mp*



*p*

17

*mf*

Detailed description: A single musical staff in bass clef with a key signature of two flats and a 4/4 time signature. It contains a sequence of notes starting with a quarter note, followed by a half note, and then several dotted half notes. A box containing the number '17' is positioned above the first measure. The dynamic marking *mf* is centered below the staff.

25

*f* *ben rit...* *ff*

Detailed description: A single musical staff in bass clef with a key signature of two flats and a 4/4 time signature. It contains a sequence of notes, including quarter and half notes. A box containing the number '25' is positioned above the first measure. The dynamic marking *f* is below the first measure, and *ff* is below the final measure. The text *ben rit...* is written above the staff towards the end.

**3. Presto** (G.B. Pescetti)  
Duration 1 15 min 1704-1766

Presto ♩ = 120

*f* *mf*

Detailed description: A single musical staff in bass clef with a key signature of two flats and a 2/4 time signature. It contains a sequence of notes, including quarter and eighth notes. The dynamic marking *f* is below the first measure, and *mf* is below the middle of the staff.

9

*p* *f*

Detailed description: A single musical staff in bass clef with a key signature of two flats and a 4/4 time signature. It contains a sequence of notes, including quarter and half notes. A box containing the number '9' is positioned above the first measure. The dynamic marking *p* is below the first measure, and *f* is below the final measure.

24

*f*

Detailed description: A single musical staff in bass clef with a key signature of two flats and a 4/4 time signature. It contains a sequence of notes, including quarter and eighth notes. A box containing the number '24' is positioned above the final measure. The dynamic marking *f* is below the final measure.

32

*mp*

Detailed description: A single musical staff in bass clef with a key signature of two flats and a 4/4 time signature. It contains a sequence of notes, including quarter and eighth notes. A box containing the number '32' is positioned above the middle of the staff. The dynamic marking *mp* is below the middle of the staff.

44

*mf* *f*

Detailed description: A single musical staff in bass clef with a key signature of two flats and a 4/4 time signature. It contains a sequence of notes, including quarter and half notes. A box containing the number '44' is positioned above the middle of the staff. The dynamic marking *mf* is below the first measure, and *f* is below the final measure.

50

*ff*

Detailed description: A single musical staff in bass clef with a key signature of two flats and a 4/4 time signature. It contains a sequence of notes, including quarter and half notes. A box containing the number '50' is positioned above the middle of the staff. The dynamic marking *ff* is below the middle of the staff.

# A TASTE OF BAROQUE

1e Trombone Bes/Sib  
Posaune I B

Henry Purcell/Johan Krieger/Giovanni Battista Pescetti  
arr. Rita Defoort

## 1. A Ground in Gamut

Duration 1 40 min

(H. Purcell, 1659-1695)

Andante Cantabile  $\text{♩} = 92$

Musical score for 'A Ground in Gamut' in G major, 3/4 time. The score consists of five staves of music. The first staff begins with a treble clef, a key signature of one sharp (F#), and a 3/4 time signature. The tempo is 'Andante Cantabile' with a quarter note equal to 92 beats per minute. The first staff starts with a forte (*f*) dynamic. The second staff has a box containing the number '9' above the first measure and a box containing '17' above the eighth measure. The dynamic changes to mezzo-piano (*mp*) and then mezzo-forte (*mf*). The third staff has a box containing '25' above the first measure and a dynamic of *mf*. The fourth staff has a box containing '33' above the first measure, followed by the word 'Bar.' and a dynamic of *mp*. The fifth staff has a box containing '41' above the first measure, followed by the word 'play' and a dynamic of *f*. The piece concludes with a fermata and the instruction 'ben rit...'.

## 2. Menuet (J. Krieger)

Duration 1 10 min

1651-1735

Andante  $\text{♩} = 84$

Musical score for 'Menuet' in G major, 3/4 time. The score consists of one staff of music. The first staff begins with a treble clef, a key signature of one sharp (F#), and a 3/4 time signature. The tempo is 'Andante' with a quarter note equal to 84 beats per minute. The piece starts with a mezzo-piano (*mp*) dynamic.

9 8 17

*mf*

Detailed description: A musical staff in G major (one sharp) and 2/4 time. It starts with a measure containing an 8-measure rest, marked with a box containing the number 9. The music begins with a half note G4, followed by quarter notes A4, B4, and C5, each with a slur above it. The dynamic is *mf*.

25

*f* *ben rit...* *ff*

Detailed description: A musical staff in G major and 2/4 time. It starts with a half note G4, followed by quarter notes A4, B4, and C5, each with a slur above it. The dynamic is *f*. The music ends with a half note G4, marked with a box containing the number 25. The dynamic changes to *ff* with the instruction *ben rit...* and a hairpin indicating a decrescendo.

**3. Presto** (G.B. Pescetti)  
Duration 1 15 min 1704-1766

Presto ♩ = 120

*f* *mf*

Detailed description: A musical staff in G major and 2/4 time. It starts with a repeat sign and a 2/4 time signature. The music consists of quarter notes G4, A4, B4, and C5, each with a slur above it. The dynamic is *f*. The music then transitions to eighth notes G4, A4, B4, and C5, each with a slur above it. The dynamic is *mf*.

9

*p*

Detailed description: A musical staff in G major and 2/4 time. It starts with eighth notes G4, A4, B4, and C5, each with a slur above it. The dynamic is *p*. The music then transitions to quarter notes G4, A4, B4, and C5, each with a slur above it. The dynamic is *p*.

16 24

*f*

Detailed description: A musical staff in G major and 2/4 time. It starts with a half note G4, followed by quarter notes A4, B4, and C5, each with a slur above it. The dynamic is *f*. The music then transitions to quarter notes G4, A4, B4, and C5, each with a slur above it. The dynamic is *f*. The music ends with a double bar line and a 4-measure rest, marked with a box containing the number 24.

32

*f* *mp*

Detailed description: A musical staff in G major and 2/4 time. It starts with eighth notes G4, A4, B4, and C5, each with a slur above it. The dynamic is *f*. The music then transitions to quarter notes G4, A4, B4, and C5, each with a slur above it. The dynamic is *mp*. The music ends with a double bar line and a 4-measure rest, marked with a box containing the number 32.

44

*mf* *f*

Detailed description: A musical staff in G major and 2/4 time. It starts with a half note G4, followed by quarter notes A4, B4, and C5, each with a slur above it. The dynamic is *mf*. The music then transitions to quarter notes G4, A4, B4, and C5, each with a slur above it. The dynamic is *f*.

50

*ff*

Detailed description: A musical staff in G major and 2/4 time. It starts with a half note G4, followed by quarter notes A4, B4, and C5, each with a slur above it. The dynamic is *ff*. The music then transitions to quarter notes G4, A4, B4, and C5, each with a slur above it. The dynamic is *ff*.

# A TASTE OF BAROQUE

2e Trombone Bes/Sib  
Posaune II B



Henry Purcell/Johan Krieger/Giovanni Battista Pescetti  
arr. Rita Defoort

## 1. A Ground in Gamut

Duration 1 40 min

(H. Purcell, 1659-1695)

Andante Cantabile ♩=92



## 2. Menuet (J. Krieger)

Duration 1 10 min

1651-1735

Andante ♩=84



25 *f* *ben rit...* *ff*

**3. Presto** (G.B. Pescetti)  
Duration 1 15 min 1704-1766

Presto ♩ = 120

*f* *mf*

9 *p*

16 *f*

24 *f* 32 *mp*

*mf*

44 *f*

50 *ff*



# A TASTE OF BAROQUE

3e Trombone Bes/Sib  
Posaune III B

Henry Purcell/Johan Krieger/Giovanni Battista Pescetti  
arr. Rita Defoort

## 1. A Ground in Gamut

Duration 1 40 min

(H. Purcell, 1659-1695)

Andante Cantabile ♩=92

Musical score for 'A Ground in Gamut' in G major, 3/4 time. The score consists of four staves of music. The first staff begins with a treble clef, a key signature of one sharp (F#), and a 3/4 time signature. The tempo is marked 'Andante Cantabile' with a quarter note equal to 92 beats per minute. The first measure is marked with a forte 'f' dynamic. The second staff contains measures 9 to 17, with a mezzo-piano 'mp' dynamic at the start and a mezzo-forte 'mf' dynamic at measure 17. The third staff contains measures 25 to 32, with a mezzo-forte 'mf' dynamic at the start. The fourth staff contains measures 33 to 41, with a forte 'f' dynamic at the start and a 'ben rit...' marking at the end. The score concludes with a double bar line and repeat dots.

## 2. Menuet (J. Krieger)

Duration 1 10 min

1651-1735

Andante ♩=84

Musical score for 'Menuet' in G minor, 3/4 time. The score consists of two staves of music. The first staff begins with a treble clef, a key signature of two flats (Bb, Eb), and a 3/4 time signature. The tempo is marked 'Andante' with a quarter note equal to 84 beats per minute. The first measure is marked with a mezzo-piano 'mp' dynamic. The second staff contains measures 9 to 16, with a piano 'p' dynamic at the start. The score concludes with a double bar line and repeat dots.

17

*mf*

25

*f* *ben rit...* *ff*

**3. Presto** (G.B. Pescetti)  
Duration 1 15 min. 1704-1766

Presto ♩=120

*f* *mf*

9

*p* *f*

24

*f*

32

*mp*

44

*mf* *f*

50

*ff*